

# Technical Data Sheet

CODE 11560

## QE-B I

Centrifugal duct fans



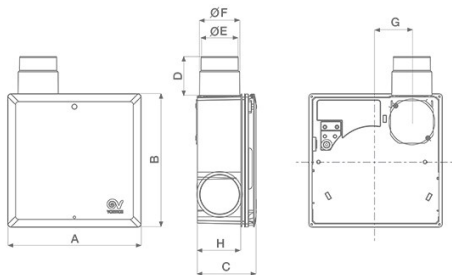
### Certifications



### TECHNICAL AND PERFORMANCE DATA

Nominal Diameter (mm) 80 Weight (Kg) 0,54

### DIMENSIONS



|             |       |
|-------------|-------|
| Size A (mm) | 262   |
| Size B (mm) | 262   |
| Size C (mm) | 115,5 |
| Size D (mm) | 80    |
| Size E (mm) | 73    |
| Size F (mm) | 79    |
| Size G (mm) | 71,5  |
| Size H (mm) | 90    |

#### PER INFORMAZIONI:

Servizio al Cliente: tel +39 02 90699395 premendo 1 dopo messaggio registrato (consulenza su prodotti e impianti)

Pre & Post Vendita: fax +39 02 90699302

Email prevendita: prevendita@vortice-italy.com

# Technical Data Sheet

CODE 11560

## QE-B I

Centrifugal duct fans



### DESCRIPTION

- Basic encasement for recessed installation, made of ABS plastic.
- Spigot made of ABS plastic, integrating the backdraught shutter compliant with DIN 18017-3, as certified by TUV German Institute.
- Spigot nominal diameter: 80 mm.
- Square frame to prevent entry of dirt and plaster.
- Connection port to connect a spigot (QE-AD cod. 21118, available as accessory) able to extract air from a second room.
- Possibility of drywall installation.

### ACCESSORIES



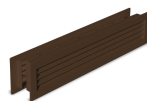
#### QE-AD

Code 21118



#### SAWG

Code 21119



#### SABG

Code 21120



#### AVR 100

Code 21121



#### AVR 125

Code 21122



#### AVR 140

Code 21123



#### AVR 160

Code 21124



#### AVR 180

Code 21125



#### AVR 200

Code 21126



#### MDV 100

Code 21127



#### ADV 100

Code 21128



#### MSDV 100

Code 21129



#### ASDV 100

Code 21130



#### 3SS-D

Code 21132



#### 2SS-I

Code 21133

#### PER INFORMAZIONI:

Servizio al Cliente: tel +39 02 90699395 premendo 1 dopo messaggio registrato (consulenza su prodotti e impianti)

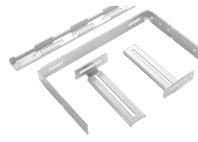




**3SS-I**  
Code 21134



**QE-SPF**  
Code 21101



**QE-UMB**  
Code 24094



**QE-MH**  
Code 24127



**QE-TEK**  
Code 24128



**QE-SRK**  
Code 24129



**QE-FBA**  
Code 24183



**QE-CFR**  
Code 24229