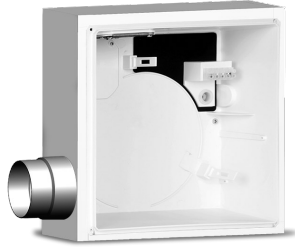


# Technical Data Sheet

CODE 11567

## QE-B I K90 R 2L

Centrifugal duct fans



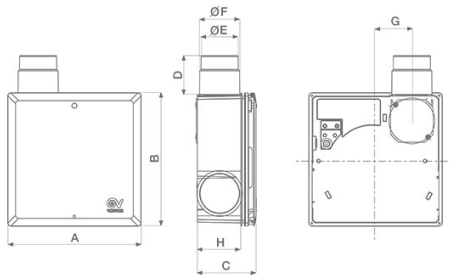
### Certifications



### TECHNICAL AND PERFORMANCE DATA

Nominal Diameter (mm)	80	Weight (Kg)	3,07
-----------------------	----	-------------	------

### DIMENSIONS



Size A (mm)	285
Size B (mm)	285
Size C (mm)	131,5
Size D (mm)	60
Size E (mm)	Ø 73
Size F (mm)	Ø 79
Size H (mm)	106
Size I (mm)	67
Size K (mm)	71,5
Size L (mm)	76

#### PER INFORMAZIONI:

Servizio al Cliente: tel +39 02 90699395 premendo 1 dopo messaggio registrato (consulenza su prodotti e impianti)

Pre & Post Vendita: fax +39 02 90699302

Email prevendita: prevendita@vortice-italy.com

# Technical Data Sheet

CODE 11567

## QE-B I K90 R 2L

Centrifugal duct fans



### DESCRIPTION

- Refractory fireproof K90 casing for recessed installation and main rear discharge.
- Stainless steel spigot, integrating the K90 fireproof valve, TUM certified according to DIN 18017-3.
- Backdraught shutter compliant with DIN 18017-3, as certified by TUV German Institute.
- Spigot nominal diameter: 80 mm.
- Square frame to prevent entry of dirt and plaster.
- Stainless steel spigot, on the left side, able to extract air from a second room.

### ACCESSORIES



#### SAWG

Code 21119



#### SABG

Code 21120



#### AVR 100

Code 21121



#### AVR 125

Code 21122



#### AVR 140

Code 21123



#### AVR 160

Code 21124



#### AVR 180

Code 21125



#### AVR 200

Code 21126



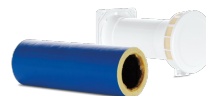
#### MDV 100

Code 21127



#### ADV 100

Code 21128



#### MSDV 100

Code 21129



#### ASDV 100

Code 21130



#### 3SS-D

Code 21132



#### 2SS-I

Code 21133



#### 3SS-I

Code 21134

#### PER INFORMAZIONI:

Servizio al Cliente: tel +39 02 90699395 premando 1 dopo messaggio registrato (consulenza su prodotti e impianti)

Pre & Post Vendita: fax +39 02 90699302





**QE-SPF**  
Code 21101



**QE-SRK**  
Code 24129



**QE-FBA**  
Code 24183



**QE-CFR**  
Code 24229