

# Technical Data Sheet

CODE 12011

## ARIETT LL I T

Centrifugal duct fans for flush mounting



### Certifications



IMQ



CE



IMQ Performance



EAC



UKCA

### TECHNICAL AND PERFORMANCE DATA

Absorbed Current max (A)	0,13	Voltage (V)	230
Absorbed Power max (W)	19	Weight (Kg)	1,9
Frequency (Hz)	50	Delivery max (l/s)	uscita: posteriore 22,2 laterale 19,4
Insulation Class	II°	Delivery max (m³/h)	80
IP	X4	Pressure max - max speed (mmH2O)	11
Max ambient temperature for continuous operation (°C)	40	Pressure max (mmH2O)	11
Max. absorbed power at max speed (W)	19	Pressure max (Pa)	108
Nominal Diameter (mm)	100	RPM	2360
Ø Discharge Hole (mm)	96,5	RPM side air outlet - max speed	2460

### DIMENSIONS

Size A (mm)	252
Size B (mm)	23
Size C (mm)	65
Size D (mm)	214,5
Size E (mm)	228
Size F (mm)	135,3
Size G (mm)	31,5/76,7
Size H (mm)	Ø 96,5
Size I (mm)	180
Size L (mm)	92
Size M (mm)	76

#### PER INFORMAZIONI:

**Servizio al Cliente:** tel +39 02 90699395 premendo 1 dopo messaggio registrato (consulenza su prodotti e impianti)

**Pre & Post Vendita:** fax +39 02 90699302

**Email prevendita:** prevendita@vortice-italy.com

# Technical Data Sheet

CODE 12011

## ARIETT LL I T

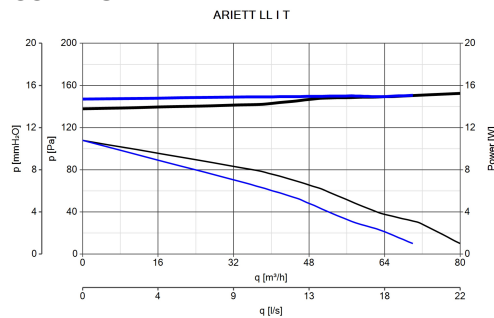
Centrifugal duct fans for flush mounting



### DESCRIPTION

- Material: UV resistant plastic (prevents ageing caused by exposure to sunlight).
- Nominal diameter: 100 mm
- Motor with thermal overload protection and shaft turning in ball bearings.
- Maximum air flow, rear: 80 m<sup>3</sup>/h
- Maximum air flow, side: 70 m<sup>3</sup>/h
- Vertical outlet port supplied as standard with spigot positionable horizontally by means of diverter.
- Rear outlet port equipped with non-return damper.
- Equipped with electronic timer designed to shut off the motor automatically after a set interval, selectable during installation in the range 3'-20' (default setting 3').
- IMQ SAFETY and IMQ PERFORMANCE certifications
- Vortice speed controller.

### CURVES



### ACCESSORIES



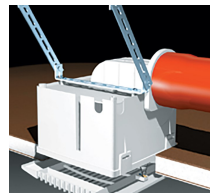
#### DEVIATORE DI FLUSSO M 10/4

Code 22310



#### KIT CONTROSOFFITTORE ORIZZONTALE

Code 22823



#### RACCORDO

#### ALTO

Code 22841

#### PER INFORMAZIONI:

Servizio al Cliente: tel +39 02 90699395 premendo 1 dopo messaggio registrato (consulenza su prodotti e impianti)

Pre & Post Vendita: fax +39 02 90699302

Email prevendita: [prevendita@vortice-italy.com](mailto:prevendita@vortice-italy.com)