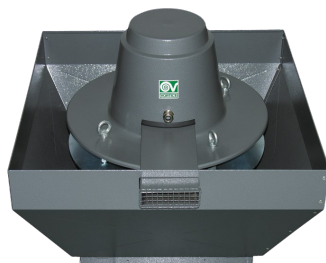


# Technical Data Sheet

CODE 15179

## TORRETTA TRT 210 ED-V 6P

Centrifugal roof fans with vertical discharge for hot fumes extraction



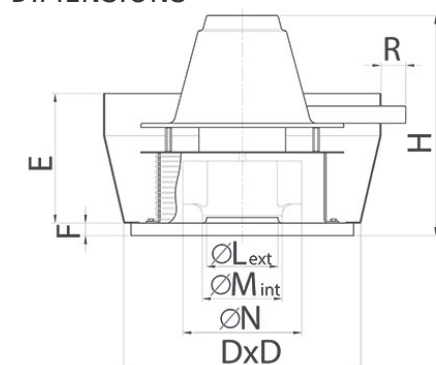
### Certifications



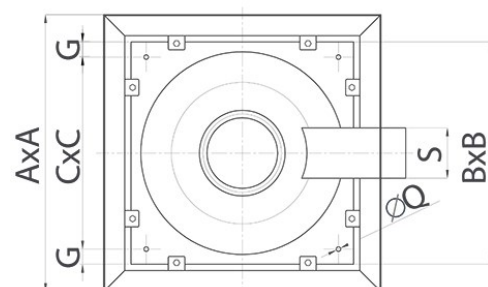
### TECHNICAL AND PERFORMANCE DATA

Absorbed Current max (A)	6,42	Number of Poles	6
Absorbed Power max (W)	3460	Voltage (V)	400
Frequency (Hz)	50	Weight (Kg)	222
Insulation Class	I°	Delivery max (l/s)	5000
Max ambient temperature for continuous operation (°C)	90	Delivery max (m³/h)	18000
Motor IP protection	55	Pressure max (mmH2O)	80
Nominal Diameter (mm)	550	Pressure max (Pa)	785
Number of Phases (Ph)	3	RPM	950
		Sound Pressure level Lp [dB (A)] 3m	84

### DIMENSIONS



Dimensione Q (mm)	12
Dimensione R (mm)	50
Size A (mm)	1462
Size B (mm)	980
Size C (mm)	900
Size D (mm)	1010
Size E (mm)	595
Size F (mm)	38
Size G (mm)	40
Size H (mm)	923
Size L (mm)	520
Size M (mm)	529
Size N (mm)	805



#### PER INFORMAZIONI:

**Servizio al Cliente:** tel +39 02 90699395 premendo 1 dopo messaggio registrato (consulenza su prodotti e impianti)

**Pre & Post Vendita:** fax +39 02 90699302

**Email prevendita:** prevendita@vortice-italy.com

# Technical Data Sheet

CODE 15179

## TORRETTA TRT 210 ED-V 6P

Centrifugal roof fans with vertical discharge for hot fumes extraction



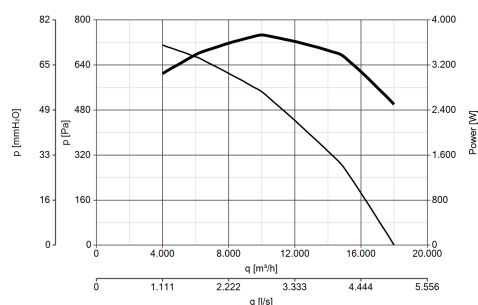
### DESCRIPTION

- Centrifugal roof fan suitable for extracting hot fumes at up to 400 °C for 120 minutes.
- Base manufactured from phosphated pressed steel, epoxy powder coated with hammered effect finish, guaranteeing long-term resistance to atmospheric agents.
- Aerodynamically contoured inlet port for optimum performance, fashioned as a single unit with the base and gauged to optimize air flow.
- Motor mounting plate made of steel with galvanization surface treatment.
- Protective cap carried by top plate made of steel with galvanization surface treatment.
- Cold outside air drawn into a cooling chamber made of pressed steel with polyester powder coated and oven baked hammered effect finish, colour grey.
- Pressed steel motor cover: pickled and phosphated surface, polyester powder coated and oven baked finish, colour grey, with hammered

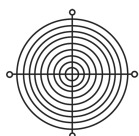
texture.

- Accident prevention and anti-bird grilles (to UNI ISO 13857 standard), consisting of electrically welded steel rings with epoxy powder coated finish, colour black.
- Centrifugal impeller with self-cleaning backward curved blades, dynamically balanced (UNI ISO 1940, Point 1 – Class 6.3), made of electrolytically galvanized steel.
- 1 speed three-phase AC motor with shaft turning in ball bearings, size to UNEL MEC standard, flange B5, self-ventilating. Motor insulation class H, with metal cooling fan and cable gland.
- Maximum air flow: 18000 m<sup>3</sup>/h.
- Galvanized steel eye lugs for transport and lifting/handling operations.
- Cable guaranteeing continuity of earth connection.
- Steel safety wire for anchoring appliances once installed.
- Vortice speed controller.

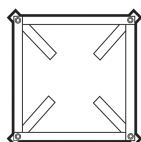
### CURVES



### ACCESSORIES



**TR-G**  
**100/150/180/210**  
**6-8P(GRIGLI**  
**APROT.)**  
Code 22507



**TR-CU**  
**100/150/180/210**  
**6-**  
**8P(CONTROT.BASE)TRIF.)**  
Code 22540



**TR-CVT**  
**(COMMUTATORE**  
**VELOCITA'**  
**)**  
Code 22910



**IRET INVERTER**  
**8 M**  
Code 12821

#### PER INFORMAZIONI:

**Servizio al Cliente:** tel +39 02 90699395 premendo 1 dopo messaggio registrato (consulenza su prodotti e impianti)

**Pre & Post Vendita:** fax +39 02 90699302

**Email prevendita:** prevendita@vortice-italy.com