

# Technical Data Sheet

CODE 16141

## CA 125 MD E RF

Centrifugal duct fans for roof mounting



### Certifications



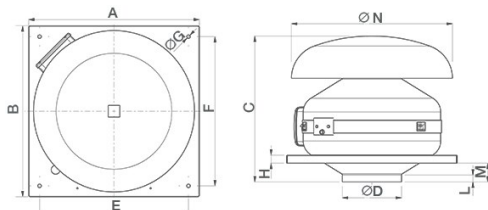
IMQ Performance



### TECHNICAL AND PERFORMANCE DATA

Absorbed power 1st speed (W)	12	Delivery 1st speed (l/s)	32.7
Frequency (Hz)	50-60	Delivery 1st speed (m <sup>3</sup> /h)	118
Insulation Class	II <sup>0</sup>	Max delivery at max speed (l/s)	86.6
IP	45	Max delivery at max speed (m <sup>3</sup> /h)	312
Max absorbed Power at 60Hz (W)	65	Pressure - 1st speed (mmH2O)	16.5
Max ambient temperature for continuous operation (°C)	50	Pressure - 1st speed (Pa)	161.8
Max. absorbed Current at max. speed (A)	0,23	Pressure max - max speed (mmH2O)	36.3
Max. absorbed Current at min. speed (A)	0.13	Pressure max - max speed (Pa)	356.1
Max. absorbed power at max speed (W)	50	RPM max	2405
Nominal Diameter (mm)	125	RPM min	915
Voltage (V)	220-240	Sound pressure level Lp [dB (A)] 3m - max speed	40.2
Weight (Kg)	4,6	Sound pressure level Lp [dB (A)] 3m - min speed	21.5

### DIMENSIONS



Size A (mm)	334
Size B (mm)	334
Size C (mm)	305
Size D (mm)	∅ 122
Size E (mm)	280
Size F (mm)	280
Size G (mm)	∅ 9
Size H (mm)	20
Size L (mm)	23
Size M (mm)	35
Size N (mm)	∅ 300
Size O (mm)	198

#### PER INFORMAZIONI:

Servizio al Cliente: tel +39 02 90699395 premendo 1 dopo messaggio registrato (consulenza su prodotti e impianti)

Pre & Post Vendita: fax +39 02 90699302

Email prevendita: prevendita@vortice-italy.com

# Technical Data Sheet

CODE 16141

## CA 125 MD E RF

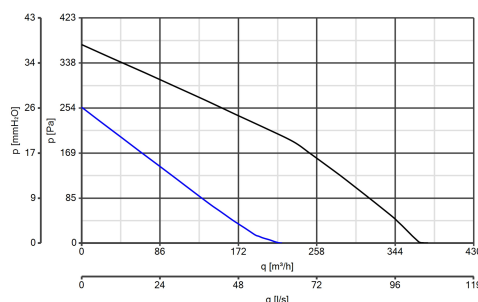
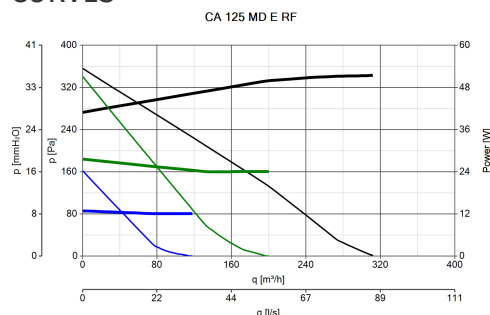
Centrifugal duct fans for roof mounting



### DESCRIPTION

- Pickled and phosphated steel housing/roof mounting plate with polyester powder-coated finish, resistant to the aggressive action of atmospheric agents.
- Nominal diameter 125 mm.
- 3 speed fan through TRIO-CA optional control (cod. 12869), consisting of:
  - AC motor with thermal overload cutout and shaft turning in ball bearings,
  - backward curved impeller.
- Operation controllable by remote sensors monitoring: Temperature, Relative Humidity, Smoke and Presence.
- Zinc-coated steel brackets for wall mounting.

### CURVES



### ACCESSORIES



#### C TEMP

Code 12992



#### C SMOKE

Code 12993



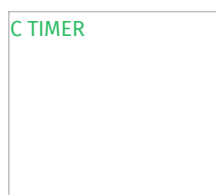
#### C HCS

Code 12994



#### C PIR

Code 12998



#### C TIMER

Code 12999



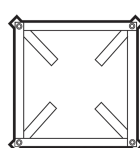
#### KIT SCB (TRASF.E.C.)

Code 22481



#### CA-G 125 (GRIGLIA DI PROTEZIONE)

Code 22755



#### PER INFORMAZIONI:

Servizio al Cliente: tel +39 02 90699395 premendo 1 dopo messaggio registrato (consulenza su prodotti e impianti)

Pre & Post Vendita: fax +39 02 90699302

Email prevendita: prevendita@vortice-italy.com

IO-CA

**(COMANDO EL.  
1.5 A)**

Code 12966

**(COMANDO EL.  
2.5 A)**

Code 12967

**(CONTROTELAIO  
DI BASE)**

Code 22543

Code 12869