

Technical Data Sheet

CODE 16183

CA 150 MD E RF

Centrifugal duct fans for roof mounting



Certifications



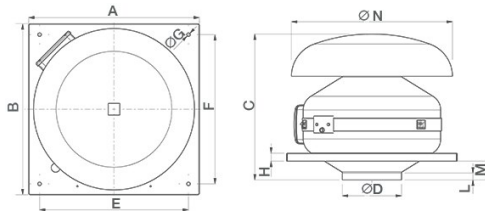
IMQ Performance



TECHNICAL AND PERFORMANCE DATA

Absorbed power 1st speed (W)	33	Delivery 1st speed (l/s)	63.8
Frequency (Hz)	50-60	Delivery 1st speed (m ³ /h)	230
Insulation Class	II ⁰	Max delivery at max speed (l/s)	136.1
IP	44	Max delivery at max speed (m ³ /h)	490
Max absorbed Power at 60Hz (W)	115	Pressure - 1st speed (mmH2O)	31.3
Max ambient temperature for continuous operation (°C)	55	Pressure - 1st speed (Pa)	307.6
Max. absorbed Current at max. speed (A)	0,39	Pressure max - max speed (mmH2O)	44
Max. absorbed Current at min. speed (A)	0.33	Pressure max - max speed (Pa)	432.1
Max. absorbed power at max speed (W)	88	RPM max	2630
Nominal Diameter (mm)	150	RPM min	1240
Voltage (V)	220-240	Sound pressure level Lp [dB (A)] 3m - max speed	43.8
Weight (Kg)	7,5	Sound pressure level Lp [dB (A)] 3m - min speed	24.6

DIMENSIONS



Size A (mm)	424
Size B (mm)	424
Size C (mm)	365
Size D (mm)	∅ 147
Size E (mm)	370
Size F (mm)	370
Size G (mm)	∅ 9
Size H (mm)	20
Size L (mm)	17
Size M (mm)	47
Size N (mm)	∅ 400
Size O (mm)	220

PER INFORMAZIONI:

Servizio al Cliente: tel +39 02 90699395 premendo 1 dopo messaggio registrato (consulenza su prodotti e impianti)

Pre & Post Vendita: fax +39 02 90699302

Email prevendita: prevendita@vortice-italy.com

Technical Data Sheet

CODE 16183

CA 150 MD E RF

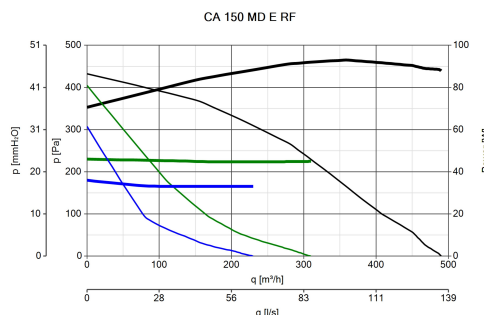
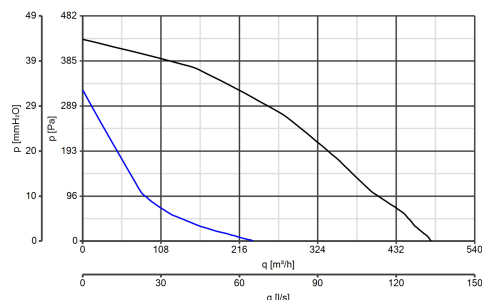
Centrifugal duct fans for roof mounting



DESCRIPTION

- Pickled and phosphated steel housing/roof mounting plate with polyester powder-coated finish, resistant to the aggressive action of atmospheric agents.
- Nominal diameter 150 mm.
- 3 speed fan through TRIO-CA optional control (cod. 12869), consisting of:
 - AC motor with thermal overload cutout and shaft turning in ball bearings,
 - backward curved impeller.
- Operation controllable by remote sensors monitoring: Temperature, Relative Humidity, Smoke and Presence.
- Zinc-coated steel brackets for wall mounting.

CURVES



ACCESSORIES



C TEMP

Code 12992



C SMOKE

Code 12993



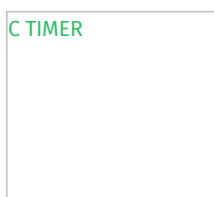
C HCS

Code 12994



C PIR

Code 12998



C TIMER

Code 12999



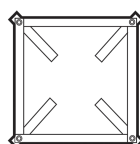
KIT SCB (TRASF.E.C.)

Code 22481



CA-G 150 (GRIGLIA DI PROTEZIONE)

Code 22760



PER INFORMAZIONI:

Servizio al Cliente: tel +39 02 90699395 premendo 1 dopo messaggio registrato (consulenza su prodotti e impianti)

Pre & Post Vendita: fax +39 02 90699302

Email prevendita: prevendita@vortice-italy.com

IO-CA

**(COMANDO EL.
1.5 A)**

Code 12966

**(COMANDO EL.
2.5 A)**

Code 12967

**150/160/200(CONTROTELAIO
DI BASE)**

Code 22544