

# Technical Data Sheet

CODE 16184

## CA 160 MD E RF

Centrifugal duct fans for roof mounting



### Certifications



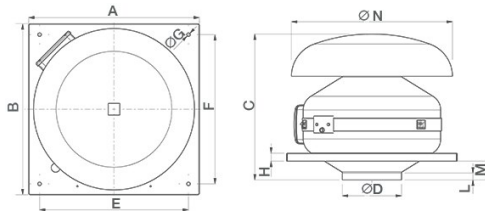
IMQ Performance



### TECHNICAL AND PERFORMANCE DATA

Absorbed power 1st speed (W)	33	Delivery 1st speed (l/s)	68
Frequency (Hz)	50-60	Delivery 1st speed (m <sup>3</sup> /h)	245
Insulation Class	II <sup>0</sup>	Max delivery at max speed (l/s)	138
IP	44	Max delivery at max speed (m <sup>3</sup> /h)	500
Max absorbed Power at 60Hz (W)	115	Pressure - 1st speed (mmH2O)	20.5
Max ambient temperature for continuous operation (°C)	55	Pressure - 1st speed (Pa)	201
Max. absorbed Current at max. speed (A)	0,39	Pressure max - max speed (mmH2O)	40,5
Max. absorbed Current at min. speed (A)	0.33	Pressure max - max speed (Pa)	400
Max. absorbed power at max speed (W)	88	RPM max	2655
Nominal Diameter (mm)	160	RPM min	1300
Voltage (V)	220-240	Sound pressure level Lp [dB (A)] 3m - max speed	44.8
Weight (Kg)	9	Sound pressure level Lp [dB (A)] 3m - min speed	30.4

### DIMENSIONS



Size A (mm)	424
Size B (mm)	424
Size C (mm)	365
Size D (mm)	∅ 157
Size E (mm)	370
Size F (mm)	370
Size G (mm)	∅ 9
Size H (mm)	20
Size L (mm)	18
Size M (mm)	47
Size N (mm)	∅ 400
Size O (mm)	250

#### PER INFORMAZIONI:

Servizio al Cliente: tel +39 02 90699395 premendo 1 dopo messaggio registrato (consulenza su prodotti e impianti)

Pre & Post Vendita: fax +39 02 90699302

Email prevendita: prevendita@vortice-italy.com

# Technical Data Sheet

CODE 16184

## CA 160 MD E RF

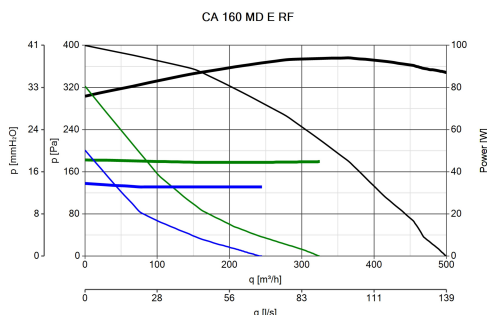
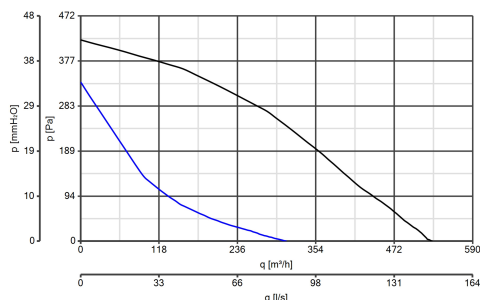
Centrifugal duct fans for roof mounting



### DESCRIPTION

- Pickled and phosphated steel housing/roof mounting plate with polyester powder-coated finish, resistant to the aggressive action of atmospheric agents.
- Nominal diameter 160 mm.
- 3 speed fan through TRIO-CA optional control (cod. 12869), consisting of:
  - AC motor with thermal overload cutout and shaft turning in ball bearings,
  - backward curved impeller.
- Operation controllable by remote sensors monitoring: Temperature, Relative Humidity, Smoke and Presence.
- Zinc-coated steel brackets for wall mounting.

### CURVES



### ACCESSORIES



**C TEMP**  
Code 12992



**C SMOKE**  
Code 12993



**C HCS**  
Code 12994



**C PIR**  
Code 12998



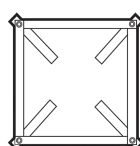
**C TIMER**  
Code 12999



**KIT SCB  
(TRAS.F.E.C.)**  
Code 22481



**CA-G 160  
(GRIGLIA DI  
PROTEZIONE)**  
Code 22762



**PER INFORMAZIONI:**

Servizio al Cliente: tel +39 02 90699395 premendo 1 dopo messaggio registrato (consulenza su prodotti e impianti)

Pre & Post Vendita: fax +39 02 90699302

Email prevendita: prevendita@vortice-italy.com

**IO-CA**

**(COMANDO EL.  
1.5 A)**

Code 12966

**(COMANDO EL.  
2.5 A)**

Code 12967

**150/160/200(CONTROTELAIO  
DI BASE)**

Code 22544