

Technical Data Sheet

CODE 16186

CA 250 MD E RF

Centrifugal duct fans for roof mounting



Certifications



IMQ



CE



IMQ Performance



EAC

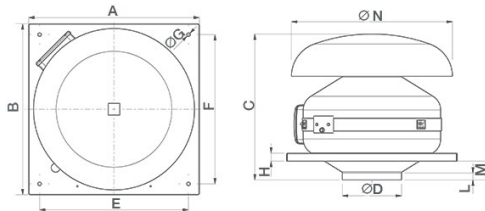


G-Mark

TECHNICAL AND PERFORMANCE DATA

Absorbed power 1st speed (W)	48	Delivery 1st speed (l/s)	106.9
Frequency (Hz)	50-60	Delivery 1st speed (m ³ /h)	385
Insulation Class	II ⁰	Max delivery at max speed (l/s)	236.1
IP	44	Max delivery at max speed (m ³ /h)	850
Max absorbed Power at 60Hz (W)	175	Pressure - 1st speed (mmH2O)	39.1
Max ambient temperature for continuous operation (°C)	50	Pressure - 1st speed (Pa)	384.1
Max. absorbed Current at max. speed (A)	0,57	Pressure max - max speed (mmH2O)	56.3
Max. absorbed Current at min. speed (A)	0.47	Pressure max - max speed (Pa)	552.2
Max. absorbed power at max speed (W)	130	RPM max	2565
Nominal Diameter (mm)	250	RPM min	1195
Voltage (V)	220-240	Sound pressure level Lp [dB (A)] 3m - max speed	43.8
Weight (Kg)	10	Sound pressure level Lp [dB (A)] 3m - min speed	28.6

DIMENSIONS



Size A (mm)	489
Size B (mm)	489
Size C (mm)	367
Size D (mm)	∅ 247
Size E (mm)	435
Size F (mm)	435
Size G (mm)	∅ 9
Size H (mm)	20
Size L (mm)	38
Size M (mm)	41
Size N (mm)	∅ 534
Size O (mm)	220

PER INFORMAZIONI:

Servizio al Cliente: tel +39 02 90699395 premendo 1 dopo messaggio registrato (consulenza su prodotti e impianti)

Pre & Post Vendita: fax +39 02 90699302

Email prevendita: prevendita@vortice-italy.com

Technical Data Sheet

CODE 16186

CA 250 MD E RF

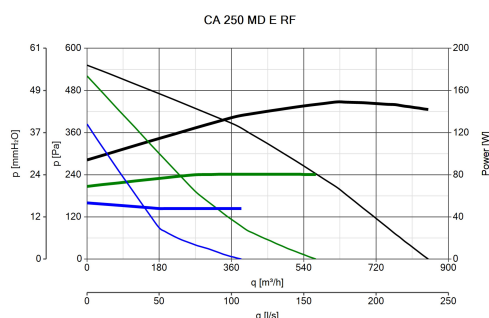
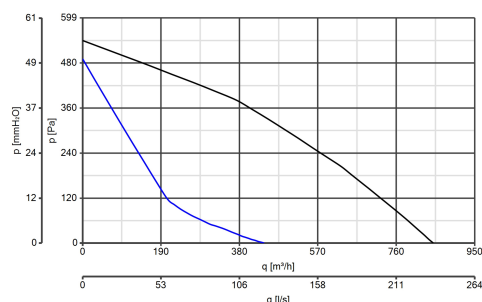
Centrifugal duct fans for roof mounting



DESCRIPTION

- Pickled and phosphated steel housing/roof mounting plate with polyester powder-coated finish, resistant to the aggressive action of atmospheric agents.
- Nominal diameter 250 mm.
- 3 speed fan through TRIO-CA optional control (cod. 12869), consisting of:
 - External rotor AC motor with thermal overload cutout and shaft turning in ball bearings,
 - backward curved impeller.
- Operation controllable by remote sensors monitoring: Temperature, Relative Humidity, Smoke and Presence.
- Zinc-coated steel brackets for wall mounting.

CURVES



ACCESSORIES



C TEMP

Code 12992



C SMOKE

Code 12993



C HCS

Code 12994



C PIR

Code 12998



C TIMER

Code 12999



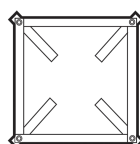
KIT SCB (TRASF.E.C.)

Code 22481



CA-G 250 (GRIGLIA DI PROTEZIONE)

Code 22770



PER INFORMAZIONI:

Servizio al Cliente: tel +39 02 90699395 premendo 1 dopo messaggio registrato (consulenza su prodotti e impianti)

Pre & Post Vendita: fax +39 02 90699302

Email prevendita: prevendita@vortice-italy.com

IO-CA

**(COMANDO EL.
1.5 A)**

Code 12966

**(COMANDO EL.
2.5 A)**

Code 12967

**250/315
(CONTROTELAIO
DI BASE)**

Code 22545

Code 12869