

# Technical Data Sheet

CODE 16256

## CA IL 200

Compact flat in-line centrifugal fans



### Certifications

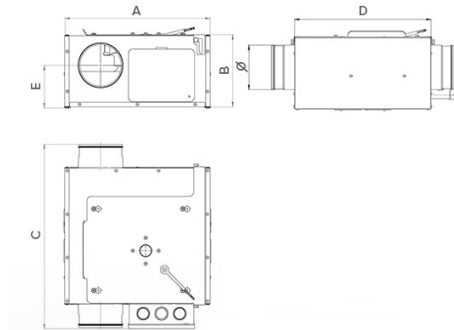
CE CE

EAC EAC

### TECHNICAL AND PERFORMANCE DATA

Frequency (Hz)	50	Number of speeds	3
Insulation Class	I°	Voltage (V)	230
Max ambient temperature for continuous operation (°C)	40	Weight (Kg)	9,4
Motor Class	F	Delivery max (l/s)	231
Motor IP protection	44	Delivery max (m³/h)	830
Nominal Current at max speed (A)	0,61	Pressure max (mmH2O)	55,3
Nominal Current at min speed (A)	0,47	Pressure max (Pa)	550
Nominal Diameter (mm)	200	Sound power level - radiated Lw [dB(A)]	62
Nominal Power at max speed (W)	140	Sound power level exhaust inlet Lw [dB(A)]	71
Nominal Power at min speed (W)	50	Sound power level supply outlet Lw [dB(A)]	78

### DIMENSIONS



Diametro Ø (mm)	200
Size A (mm)	390
Size B (mm)	238
Size C (mm)	468,5
Size D (mm)	372
Size E (mm)	118

#### PER INFORMAZIONI:

**Servizio al Cliente:** tel +39 02 90699395 premendo 1 dopo messaggio registrato (consulenza su prodotti e impianti)

**Pre & Post Vendita:** fax +39 02 90699302

**Email prevendita:** prevendita@vortice-italy.com

# Technical Data Sheet

CODE 16256

## CA IL 200

Compact flat in-line centrifugal fans



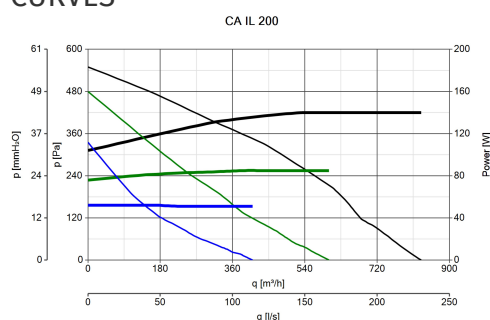
### DESCRIPTION

- Casing and motor-support made of galvanized sheet steel; lined internally with PE sound-proof panel (thickness 10 mm).
- Circular spigots for connection to standard tubes, equipped with double lip rubber seal for perfect air tightness.
- Nominal diameter: 200 mm.
- External rotor AC motorfan, with shaft turning in ball bearings, coupled to a backward curved centrifugal impeller.
- Galvanized steel sheet brackets, directly coupled to casing.
- Electric connection box accomodating capacitors, molded with shock-proof plastic resin resistant against aggressive agents, integrating cable

cages and cable glands to ensure high protection (IP55) against dust and water.

- 3 alternative installation: wall, ceiling and false-ceiling.
- Easy maintenance: motor is directly fixed to the cover, in turn hinged to the casing, allowing easy external rotation and motorfan direct access.
- Protection against dust and water: IP44.
- Electric insulation class: I (grounding is required).

### CURVES



### ACCESSORIES



**PGR 250**  
**(PERSIANA**  
**GRAVITA')**

Code 50150



**TRA 250**  
**(TELAIO CON**  
**RETE ANTINF.)**

Code 51150



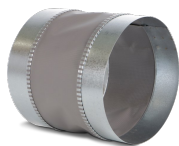
**C 1.5**  
**(COMANDO EL.**  
**1.5 A)**

Code 12966



**GR 200**

Code 21181



**FS 200**

Code 21186



**TRIO D**

Code 12866



**IREM D**

Code 12867

#### PER INFORMAZIONI:

**Servizio al Cliente:** tel +39 02 90699395 premendo 1 dopo messaggio registrato (consulenza su prodotti e impianti)

**Pre & Post Vendita:** fax +39 02 90699302

**Email prevendita:** prevendita@vortice-italy.com