

# Technical Data Sheet

CODE 42310

## MPC-E 304 T

Medium-pressure long cased axial fans



### Certifications

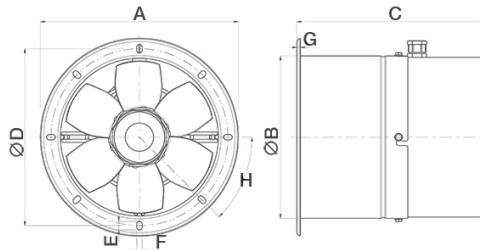
CE CE

EAC EAC

### TECHNICAL AND PERFORMANCE DATA

Absorbed Current max (A)	0,24	Number of Poles	4
Absorbed Power max (W)	107	Voltage (V)	400
Frequency (Hz)	50	Weight (Kg)	10,2
Insulation Class	I°	Delivery max (l/s)	625
IP	X4	Delivery max (m³/h)	2250
Max ambient temperature for continuous operation (°C)	70	Pressure max (mmH2O)	10,4
Min ambient temperature for continuous operation (°C)	-25	Pressure max (Pa)	102
Motor IP protection	55	RPM	1400
Nominal Diameter (mm)	300	Sound power level Lw [dB(A)]	55,3
Number of Phases (Ph)	3	Sound Pressure level Lp [dB (A)] 3m	34,8

### DIMENSIONS



Size A (mm)	Ø 393
Size B (mm)	Ø 316
Size C (mm)	330
Size D (mm)	Ø 366
Size E (mm)	14
Size F (mm)	9
Size G (mm)	4
Size H (mm)	45°

#### PER INFORMAZIONI:

**Servizio al Cliente:** tel +39 02 90699395 premendo 1 dopo messaggio registrato (consulenza su prodotti e impianti)

**Pre & Post Vendita:** fax +39 02 90699302

**Email prevendita:** prevendita@vortice-italy.com

# Technical Data Sheet

CODE 42310

## MPC-E 304 T

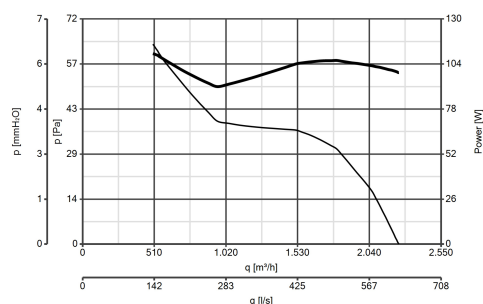
Medium-pressure long cased axial fans



### DESCRIPTION

- Nominal diameter 300 mm
- 2 rolled steel flange sections, welded, phosphated and polyester powder coated in practical grey colour with hammered effect finish, guaranteeing long-term resistance to atmospheric agents.
- 1 speed three-phase AC motor with shaft turning in double shielded ball bearings, insulation class F.
- Maximum air flow: 2,250 m<sup>3</sup>/h.
- Impeller with 6 wing profile blades, dynamically balanced (UNI ISO 1940 – Balancing class 6.3), optimized to deliver maximum performance and low noise levels, moulded from filled polypropylene for superior dimensional stability and resistance to atmospheric agents, and keyed to a diecast aluminium hub.
- Vortice speed controller.

### CURVES



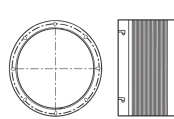
### ACCESSORIES



**IRT 15**  
Code 12923



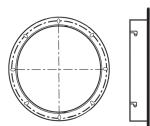
**IRET 6**  
Code 12934



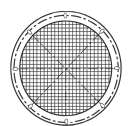
**MPC RA 300  
(RACCORDO  
FLESSIBILE)**  
Code 22517



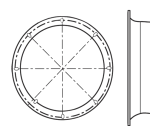
**MPC SU 300  
(SUPPORTO)**  
Code 22532



**MPC FL 300  
(FLANGIA)**  
Code 22524



**MPC RP 300  
(RETE DI  
PROTEZIONE)**  
Code 22528



**MPC BO 300  
(BOCCAGLIO)**  
Code 22536

#### PER INFORMAZIONI:

Servizio al Cliente: tel +39 02 90699395 premendo 1 dopo messaggio registrato (consulenza su prodotti e impianti)

Pre & Post Vendita: fax +39 02 90699302

Email prevendita: prevendita@vortice-italy.com