

Technical Data Sheet

CODE 42317

MPC-E 354 T

Medium-pressure long cased axial fans



Certifications

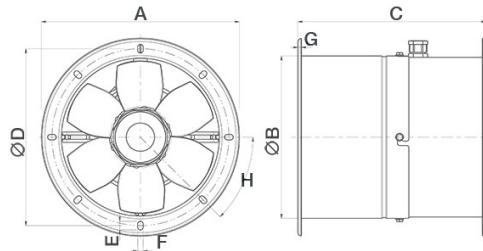
CE CE

EAC EAC

TECHNICAL AND PERFORMANCE DATA

| | | | |
|---|------|-------------------------------------|------|
| Absorbed Current max (A) | 0.30 | Number of Poles | 4 |
| Absorbed Power max (W) | 155 | Voltage (V) | 400 |
| Frequency (Hz) | 50 | Weight (Kg) | 13,4 |
| Insulation Class | I° | Delivery max (l/s) | 986 |
| IP | X4 | Delivery max (m³/h) | 3550 |
| Max ambient temperature for continuous operation (°C) | 70 | Pressure max (mmH2O) | 15.9 |
| Min ambient temperature for continuous operation (°C) | -25 | Pressure max (Pa) | 156 |
| Nominal Diameter (mm) | 350 | RPM | 1425 |
| Number of Phases (Ph) | 3 | Sound power level Lw [dB(A)] | 66.7 |
| | | Sound Pressure level Lp [dB (A)] 3m | 46.2 |

DIMENSIONS



| | |
|-------------|-------|
| Size A (mm) | ∅ 432 |
| Size B (mm) | ∅ 368 |
| Size C (mm) | 330 |
| Size D (mm) | ∅ 405 |
| Size E (mm) | 14 |
| Size F (mm) | 9 |
| Size G (mm) | 4 |
| Size H (mm) | 45° |

PER INFORMAZIONI:

Servizio al Cliente: tel +39 02 90699395 premendo 1 dopo messaggio registrato (consulenza su prodotti e impianti)

Pre & Post Vendita: fax +39 02 90699302

Email prevendita: prevendita@vortice-italy.com

Technical Data Sheet

CODE 42317

MPC-E 354 T

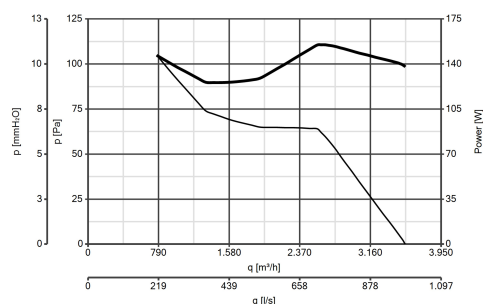
Medium-pressure long cased axial fans



DESCRIPTION

- Nominal diameter 350 mm
- 2 rolled steel flange sections, welded, phosphated and polyester powder coated in practical grey colour with hammered effect finish, guaranteeing long-term resistance to atmospheric agents.
- 1 speed three-phase AC motor with shaft turning in double shielded ball bearings, insulation class F.
- Maximum air flow: 3,770 m³/h.
- Impeller with 6 wing profile blades, dynamically balanced (UNI ISO 1940 – Balancing class 6.3), optimized to deliver maximum performance and low noise levels, moulded from filled polypropylene for superior dimensional stability and resistance to atmospheric agents, and keyed to a diecast aluminium hub.
- Vortice speed controller.

CURVES



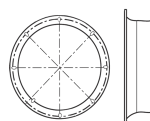
ACCESSORIES



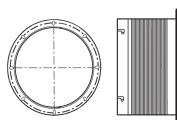
IRT 15
Code 12923



IRET 6
Code 12934



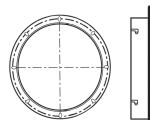
**MPC BO 350
(BOCCAGLIO)**
Code 22537



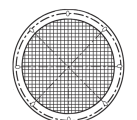
**MPC RA 350
(RACCORDO
FLESSIBILE)**
Code 22518



**MPC SU 350
(SUPPORTO)**
Code 22533



**MPC FL 350
(FLANGIA)**
Code 22525



**MPC RP 350
(RETE DI
PROTEZIONE)**
Code 22529

PER INFORMAZIONI:

Servizio al Cliente: tel +39 02 90699395 premendo 1 dopo messaggio registrato (consulenza su prodotti e impianti)

Pre & Post Vendita: fax +39 02 90699302

Email prevendita: prevendita@vortice-italy.com