

Technical Data Sheet

CODE 42359

MPC-E 254 T

Medium-pressure long cased axial fans



Certifications

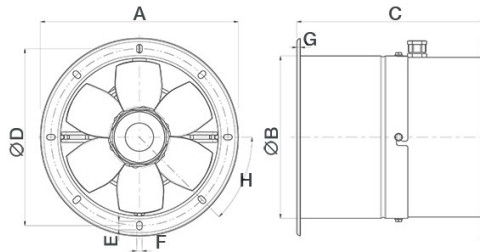
CE CE

EAC EAC

TECHNICAL AND PERFORMANCE DATA

Absorbed Current max (A)	0,21	Number of Poles	4
Absorbed Power max (W)	60	Voltage (V)	400
Frequency (Hz)	50	Weight (Kg)	8,2
Insulation Class	I°	Delivery max (l/s)	336
IP	X4	Delivery max (m³/h)	1210
Max ambient temperature for continuous operation (°C)	70	Pressure max (mmH2O)	8,2
Min ambient temperature for continuous operation (°C)	-25	Pressure max (Pa)	80
Motor IP protection	55	RPM	1460
Nominal Diameter (mm)	250	Sound power level Lw [dB(A)]	45,8
Number of Phases (Ph)	3	Sound Pressure level Lp [dB (A)] 3m	25,3

DIMENSIONS



Size A (mm)	Ø 319
Size B (mm)	Ø 264
Size C (mm)	300
Size D (mm)	Ø 292
Size E (mm)	14
Size F (mm)	9
Size G (mm)	4
Size H (mm)	45°

PER INFORMAZIONI:

Servizio al Cliente: tel +39 02 90699395 premendo 1 dopo messaggio registrato (consulenza su prodotti e impianti)

Pre & Post Vendita: fax +39 02 90699302

Email prevendita: prevendita@vortice-italy.com

Technical Data Sheet

CODE 42359

MPC-E 254 T

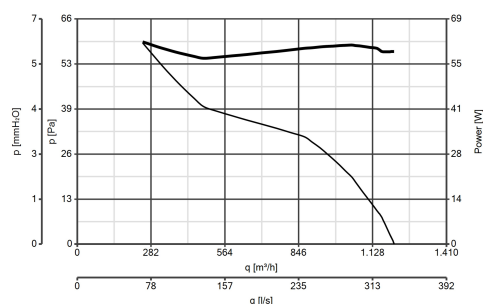
Medium-pressure long cased axial fans



DESCRIPTION

- Nominal diameter 250 mm
- 2 rolled steel flange sections, welded, phosphated and polyester powder coated in practical grey colour with hammered effect finish, guaranteeing long-term resistance to atmospheric agents.
- 1 speed three-phase AC motor with shaft turning in double shielded ball bearings, insulation class F.
- Maximum air flow: 1,210 m³/h.
- Impeller with 6 wing profile blades, dynamically balanced (UNI ISO 1940 – Balancing class 6.3), optimized to deliver maximum performance and low noise levels, moulded from filled polypropylene for superior dimensional stability and resistance to atmospheric agents, and keyed to a diecast aluminium hub.
- Vortice speed controller.

CURVES



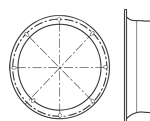
ACCESSORIES



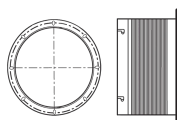
IRT 15
Code 12923



IRET 6
Code 12934



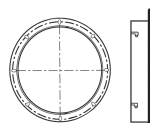
**MPC BO 250
(BOCCAGLIO)**
Code 22535



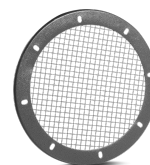
**MPC RA 250
(RACCORDO
FLESSIBILE)**
Code 22516



**MPC SU 250
(SUPPORTO)**
Code 22531



**MPC FL 250
(FLANGIA)**
Code 22523



**MPC RP 250
(RETE DI
PROTEZIONE)**
Code 22527

PER INFORMAZIONI:

Servizio al Cliente: tel +39 02 90699395 premendo 1 dopo messaggio registrato (consulenza su prodotti e impianti)

Pre & Post Vendita: fax +39 02 90699302

Email prevendita: prevendita@vortice-italy.com